

TSUNAMI MEDICAL

THE WAVE OF INNOVATION

# Hunter

Automatic device for  
soft tissues biopsy



*Bloodline*<sup>®</sup>

Tsunami S.r.l.  
Via XXV Aprile, 22  
41037 Mirandola (MO) - Italy  
tel. +39 0535 38397  
Fax +39 0535 38399  
[www.tsunamimedical.it](http://www.tsunamimedical.it)

Ref. LITEUBIO 10 © 2015 Tsunami Medical - All Rights Reserved  
Not for distribution in United States



CE

Design & Quality  
UNI EN ISO 13485:2012





**It is never been so reliable.....**

The sharpened cannula allows a safe and painless penetration. The centimeter marking helps to reach a perfect positioning and luer connector can be used for positioning the coaxial needle. The notch has been developed in order to have the best ultrasound visibility and to maintain the bioptic sample flat and stable during the removal.

**ORDERING CODES**

HUNTER is available in two different versions:  
 HTR - 20 mm notch  
 HTRS - 10 mm notch

Also available with XBL - Introducer coaxial needle

Available Codes	Measures	Q.ty per box
HTR14/10	14G X 10 cm	5
HTR14/15	14G X 15 cm	5
HTR14/20	14G X 20 cm	5
HTR14/25	14G X 25 cm	5
HTR16/10	16G X 10 cm	5
HTR16/15	16G X 15 cm	5
HTR16/20	16G X 20 cm	5
HTR16/25	16G X 25 cm	5
HTR18/10	18G X 10 cm	5
HTR18/15	18G X 15 cm	5
HTR18/20	18G X 20 cm	5
HTR18/25	18G X 25 cm	5

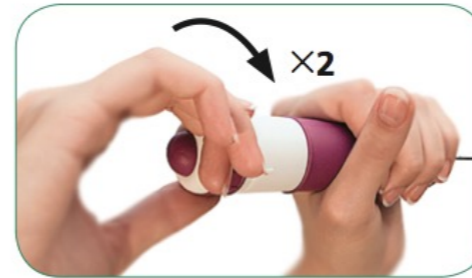
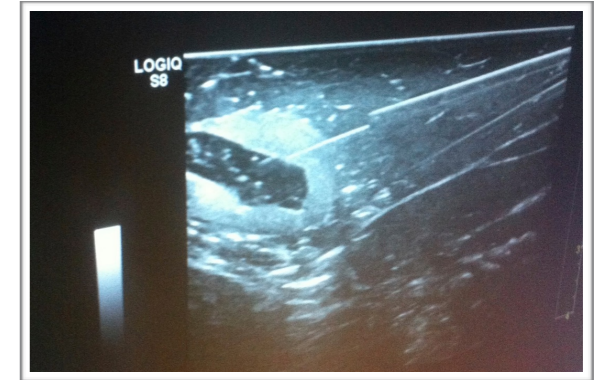
Available Codes	Measures	Q.ty per box
HTRS14/10	14G X 10 cm	5
HTRS14/15	14G X 15 cm	5
HTRS14/20	14G X 20 cm	5
HTRS14/25	14G X 25 cm	5
HTRS16/10	16G X 10 cm	5
HTRS16/15	16G X 15 cm	5
HTRS16/20	16G X 20 cm	5
HTRS16/25	16G X 25 cm	5
HTRS18/10	18G X 10 cm	5
HTRS18/15	18G X 15 cm	5
HTRS18/20	18G X 20 cm	5
HTRS18/25	18G X 25 cm	5

**HTR - HTRS**

Automatic disposable biopsy gun with ergonomic grip in soft polymer, light, easy handling, highly performing and ready to use. Suitable for prostate, liver, kidney and breast biopsies.

The notch's surface can be 10 or 20 mm and has a special treatment in order to optimize the ultrasound visibility and to maintain the histological sample perfectly flat and stable during the removal procedure.

Best-in-class for visibility under ultrasound guidance.

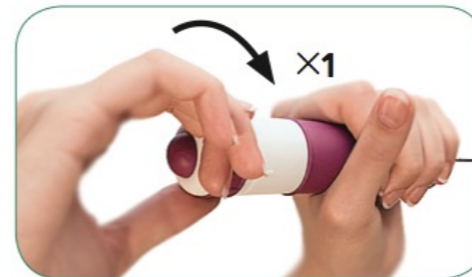


**It is never been so easy.....**

Turn two times to load cannula and stylet



One firing trigger: push once to shoot cannula and stylet



Turn once to push the cannula forward and collect the sample