
PDA Occlusion System **Nit-Occlud® PDA**

The Nit-Occlud® PDA occlusion system is designed for the safe and atraumatic occlusion of the congenital heart defect PDA (Persistent Ductus Arteriosus).

The unique coil design and its flexibility make Nit-Occlud® PDA the ideal choice for the closure of small to medium sized PDA of all types.

www.pfmmedical.com



Nit-Occlud® PDA occlusion system is designed for the safe and effective occlusion of the congenital heart defect PDA (Persistent Ductus Arteriosus). Two different types and a broad variety of sizes make the unique spiral-shaped occlusion device the ideal choice for the closure of all PDA types.

Benefits

Customised

The Nit-Occlud® PDA types Flex and Medium vary in size and flexibility to match individual PDA morphologies and sizes.

Highly flexible and adaptive

The degree of stiffness decreases from the distal to the proximal windings, allowing the coil to adapt perfectly to the anatomy of various PDA types.

Safe closure

The delivery system facilitates optimal device positioning. Tight and compact windings ensure efficient occlusion.

Easy of use

The specially developed application system is easy to use. It is inserted by means of a 4-5 F implantation catheter. The coil is repositionable and retrievable prior to release.

Details

- ▶ Pre-mounted coil system
- ▶ Fits all PDA types
- ▶ 4 F or 5 F system
- ▶ Graduated stiffness from aortal to proximal
- ▶ Strong distal windings avoid »pull through«
- ▶ Proximal windings anchor the device on the pulmonary side
- ▶ Delivery through 4 F/5 F
- ▶ Repositionable and retrievable prior to release
- ▶ Radiopaque
- ▶ MR compatible

Portfolio

Nit-Occlud® Lê VSD

VSD Occlusion Device (coil type)

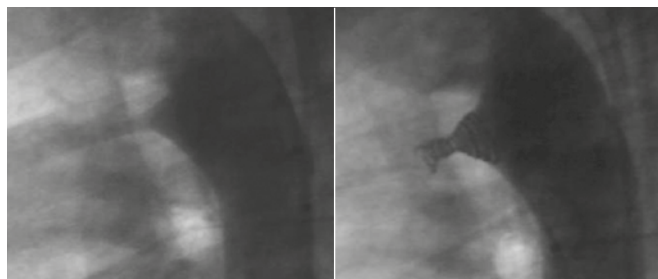
Multi-Snare®

Grasping Device

Nit-Occlud® PFO

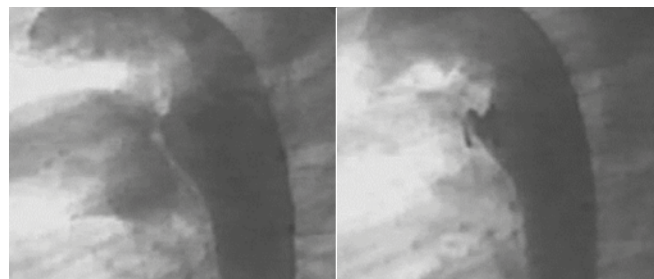
PFO Occlusion Device (umbrella type)

Use



Case 1

- ▶ Patient: female, 19 years 6 months old, 63 kg
- ▶ PDA measurements: short broad type,
- ▶ D1 = 4.0 mm, D2 = 10.0 mm, L = 7.0 mm
- ▶ Selected coil: 11 x 6 mm
- ▶ Clinical outcome: closed



Case 2

- ▶ Patient: female, 4 years old, 17 kg
- ▶ PDA measurements: short broad type,
- ▶ D1 = 3.0 mm, D2 = 10.0 mm, L = 9.0 mm
- ▶ Selected coil: 9 x 6 mm
- ▶ Clinical outcome: closed

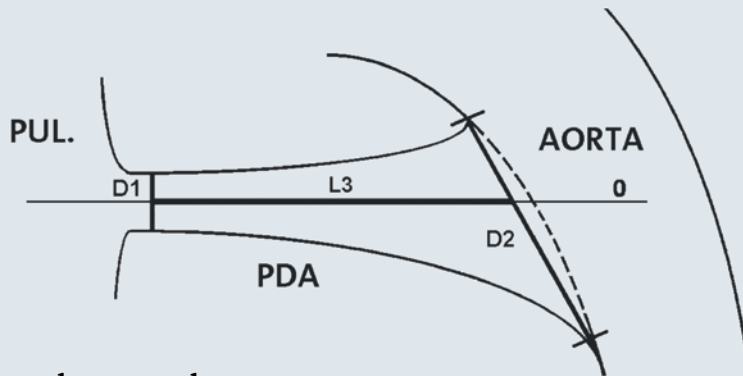
Case 1: Prof. Dr. med. Sievert, Cardiovascular Center, Frankfurt/Dr. med. Lê, Universitätsklinik Eppendorf, Hamburg, Germany

Case 2: Dr. med. Borges, Hospital de Clinicas Caracas, Venezuela/Dr. med. Freudenthal, Kardiozentrum, La Paz, Bolivia

Knowledge

The first pfm medical PDA coil system was introduced in 1993.
Since 2001 our 2nd generation system - Nit-Occlud® PDA -
is being successfully used worldwide.

Handling



Dimensions to be measured

D1 = Minimum Diameter, D2 = Maximum Diameter, L3 = PDA Length

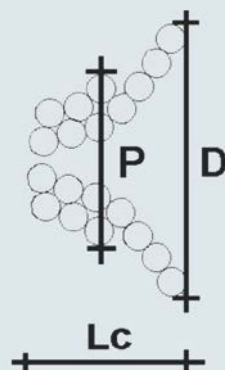
A lateral aortogram should be performed to measure the dimensions of the PDA.

According to the measurements, the ductus type and the following recommendations, a coil should be selected as follows:

The **distal coil diameter D** should be **max. 2 mm larger than D2**.

The **distal coil diameter D** should be **min. 3 to 4 mm larger than D1**.

Length of the configured coil **Lc** should be **not longer than L3**.



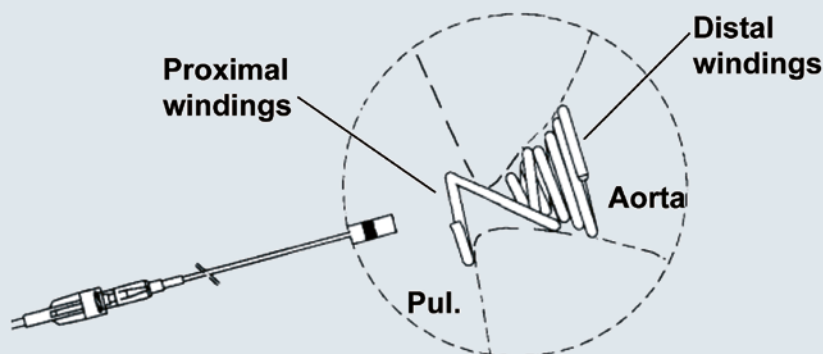
Coil Dimensions

D = Distal Diameter

P = Proximal Diameter

Lc = Length configured

Function



The Nit-Occlud® PDA coil adapts perfectly to various ductus types and sizes. To secure the implant in the ductus, **strong distal windings avoid »pull through«** back into the pulmonary artery. To avoid embolisation into the aorta, **proximal windings are anchoring** the device on the pulmonary side.

Scan the QR code or follow the link and see how the implant works

<http://www.pfmmedical.com/clip-pda>



Ordering Information

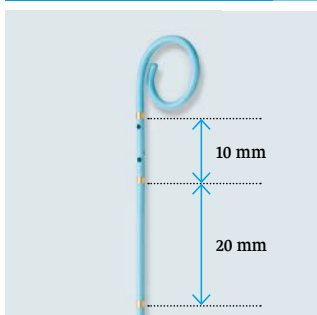


Nit-Occlud® PDA › Permanent implant for the closure of Persistent Ductus Arteriosus (PDA)

› Content: Implant, delivery system, implantation catheter

Type	REF	Distal x Prox. Coil Diameter	Lc	Implantation Catheter	Length Catheter
Flex	145044V1	4 x 4 mm	3.5 mm	4 F	85 cm
Flex	145054V1	5 x 4 mm	3.5 mm	4 F	85 cm
Flex	145065V1	6 x 5 mm	3.5 mm	4 F	85 cm
Medium	145076V1	7 x 6 mm	4.5 mm	5 F	85 cm
Medium	145096V1	9 x 6 mm	5.0 mm	5 F	85 cm
Medium	145116V1	11 x 6 mm	6.0 mm	5 F	85 cm

Ordering Accessories



Occlumarker › Pigtail Catheter for accurate aortographic measurement of PDA sizes

› Exact DCI-calibration with 3 distal markers, 10 and 20 mm apart

REF	Size	Length	Guide wire	PU
147401	4 F	50 cm	0.021"	5
147411	4 F	75 cm	0.032"	5
147471	4 F	110 cm	0.032"	5
147431	5 F	90 cm	0.035"	5
147481	5 F	110 cm	0.035"	5



Multi-Snare › For use in middle-sized to large vessels

› Content: Snare, snare catheter, insertion aid, torquer

REF	Snare Diameter	Snare Length	Introducer	Introducer Length
147305	5 mm (5-8)	125 cm	4 F	105 cm
147310	10 mm (10-15)	125 cm	4 F	105 cm
147315	15 mm (15-20)	125 cm	5 F	105 cm
147320	20 mm (20-30)	125 cm	6 F	105 cm
147330	30 mm (30-40)	125 cm	6 F	105 cm

Contact

Should you have any questions our Customer Solutions Team will be glad to assist you.

service@pfmmedical.com

+49 (0)2236 9641-221

+49 (0)2236 9641-20

pfm medical ag
Wankelstraße 60
50996 Köln, Germany

Certified according to
DIN EN ISO 13485

Products are subject to alterations
Nit-Occlud®: registered trademark
in Germany

Manufacturer:

pfm medical mepro gmbh, Am Söterberg 4, 66620 Nonnweiler-Otzenhausen, Germany, CE 0124

www.pfmmedical.com - Your information source for the products of pfm medical ag.

PB5004EN/2019-12-04

